



**ROYAL
THAI**

**STOCK
AXMINSTER**

*Marriott Classic
Select Brands*



ROYAL THAI

Overview

Royal Thai provides custom carpets that meet Marriott's approved brand standards, yet provides a unique experience for your customers.

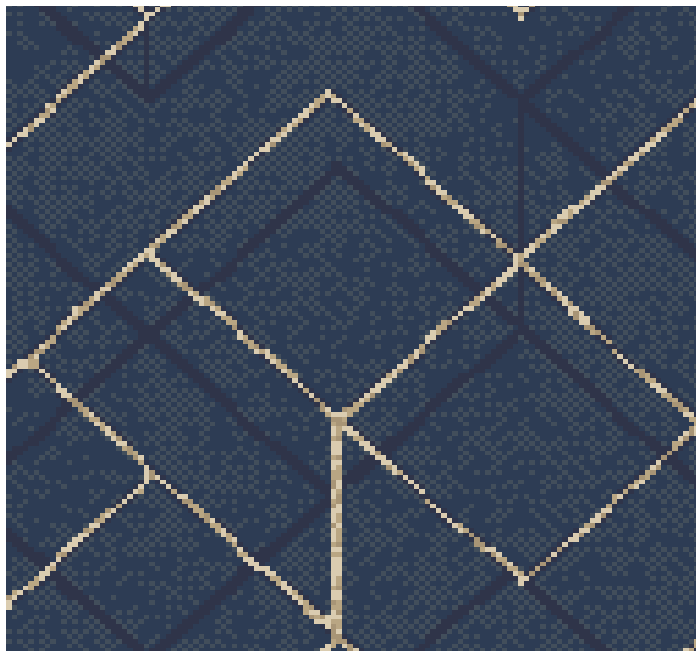
We have been making carpets for decades, and we have come to specialize in, and rely on, the long-lasting properties and endless potential of Axminster carpets. Axminster's singular weaving process creates durable carpets that offer more variety in color and pattern than any other process.

In this brochure you will find Marriott's Classic Select approved brand standards for public spaces and corridors. These carpets are held in stock at our factory to ensure fast delivery to your property. To place an order or for more information please contact your Royal Thai Sales Representative or call Royal Thai's Customer Service Department at 1-800-433-2440.

COURTYARD

INSPIRED CLASSIC

COURTYARD Public Space Inspired Classic



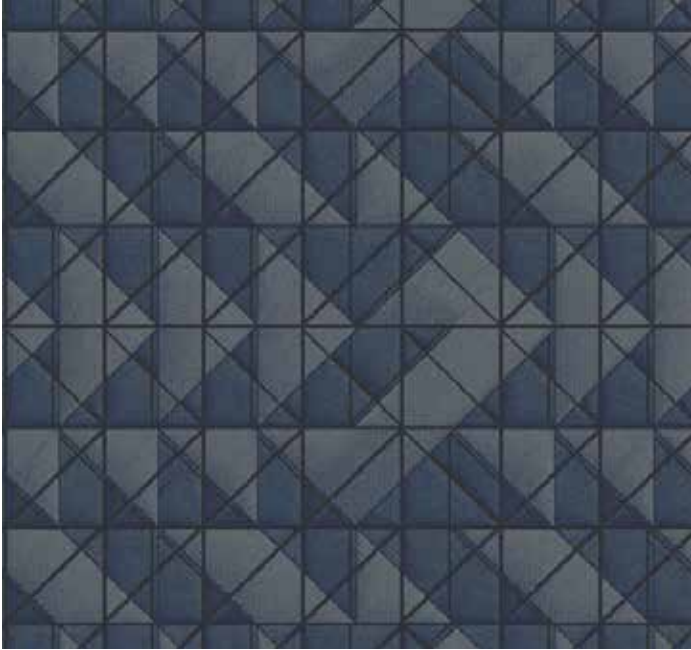
Lobby/Breakfast Room NXQ038448-43

Specifications

Repeat Size	28.86" x 41"
Scale	NTS
Quality	8
Fibre	100% Nylon
Loom Width	12'
ID #	312734

1	K324/18J	4	A310
2	K325/19J	5	L311/2D
3	H326/20K	6	N314

COURTYARD Public Space Inspired Classic



Meeting/Board Room NXM041979-6

Specifications

Repeat Size	72" x 82.5"
Scale	NTS
Quality	8
Fibre	100% Nylon
Loom Width	12'
ID #	312733

1	GR03	4	K325/19J
2	K323/17J	5	H326/20K
3	K324/18J	6	E315/39D

COURTYARD Corridor Inspired Classic



Door Fill/Outfill NXI042488-5

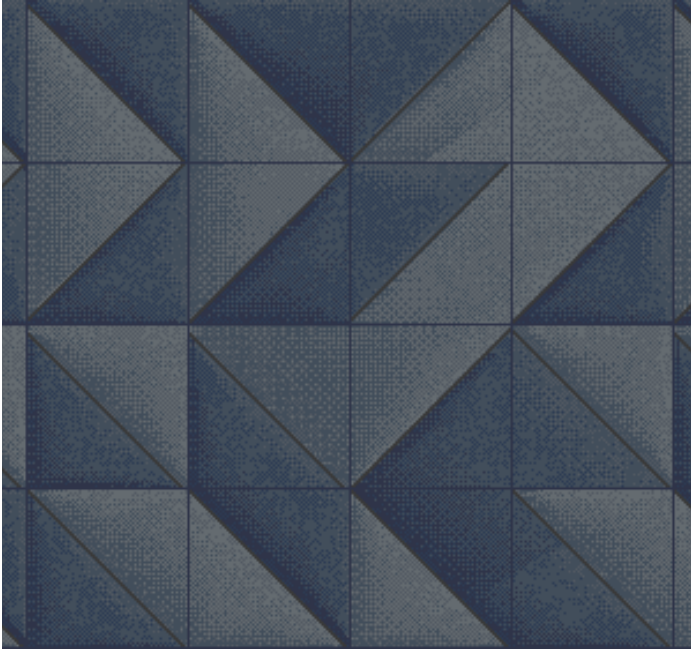
Specifications

Repeat Size	24" x 40.14"
Scale	NTS
Quality	7/7
Fibre	100% Nylon
Loom Width	12'
ID #	312593

1 K324/18J

2 H326/20K

COURTYARD Corridor Inspired Classic



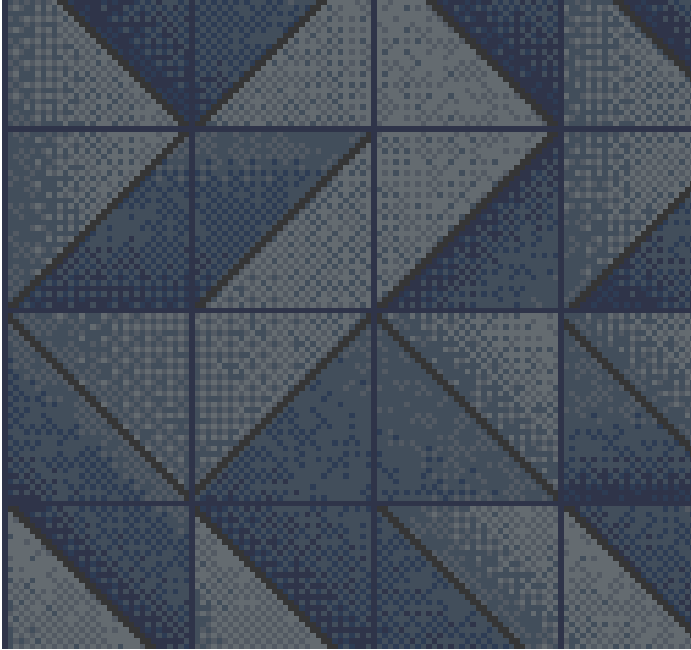
Specifications

Repeat Size	144" x 40.14"
Scale	NTS
Quality	7/7
Fibre	100% Nylon
Loom Width	12'
ID #	312592

Transition NXI042919-4

1	GR03	4	K325/19J
2	K323/17J	5	H326/20K
3	K324/18J	6	E315/39D

COURTYARD Corridor Inspired Classic



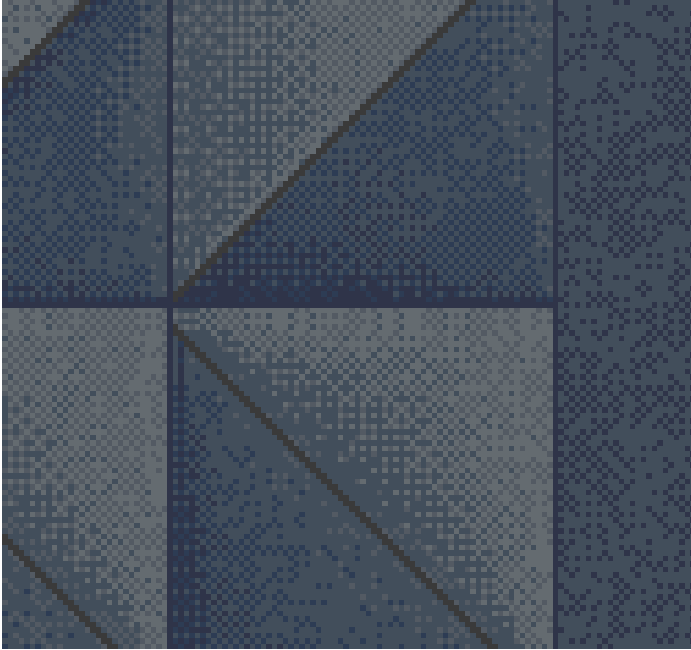
Specifications

Repeat Size	24" x 19.14"
Scale	NTS
Quality	7/7
Fibre	100% Nylon
Loom Width	12'
ID #	312596

Elevator Lobby NXE041374-22

1	GR03	4	K325/19J
2	K323/17J	5	H326/20K
3	K324/18J	6	E315/39D

COURTYARD Corridor Inspired Classic



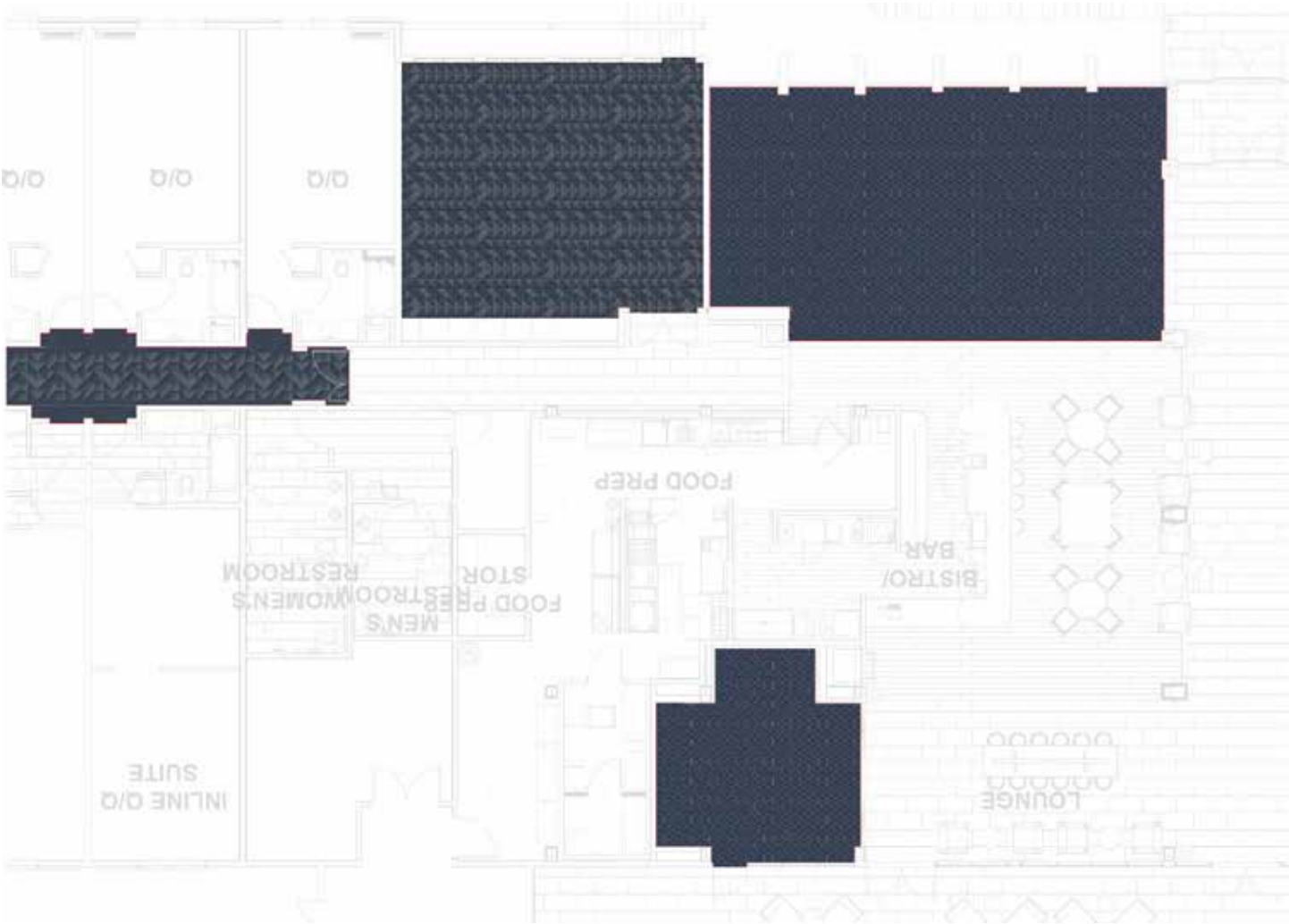
Specifications

Repeat Size	72" x 40.14"
Scale	NTS
Quality	7/7
Fibre	100% Nylon
Loom Width	12'
ID #	312598

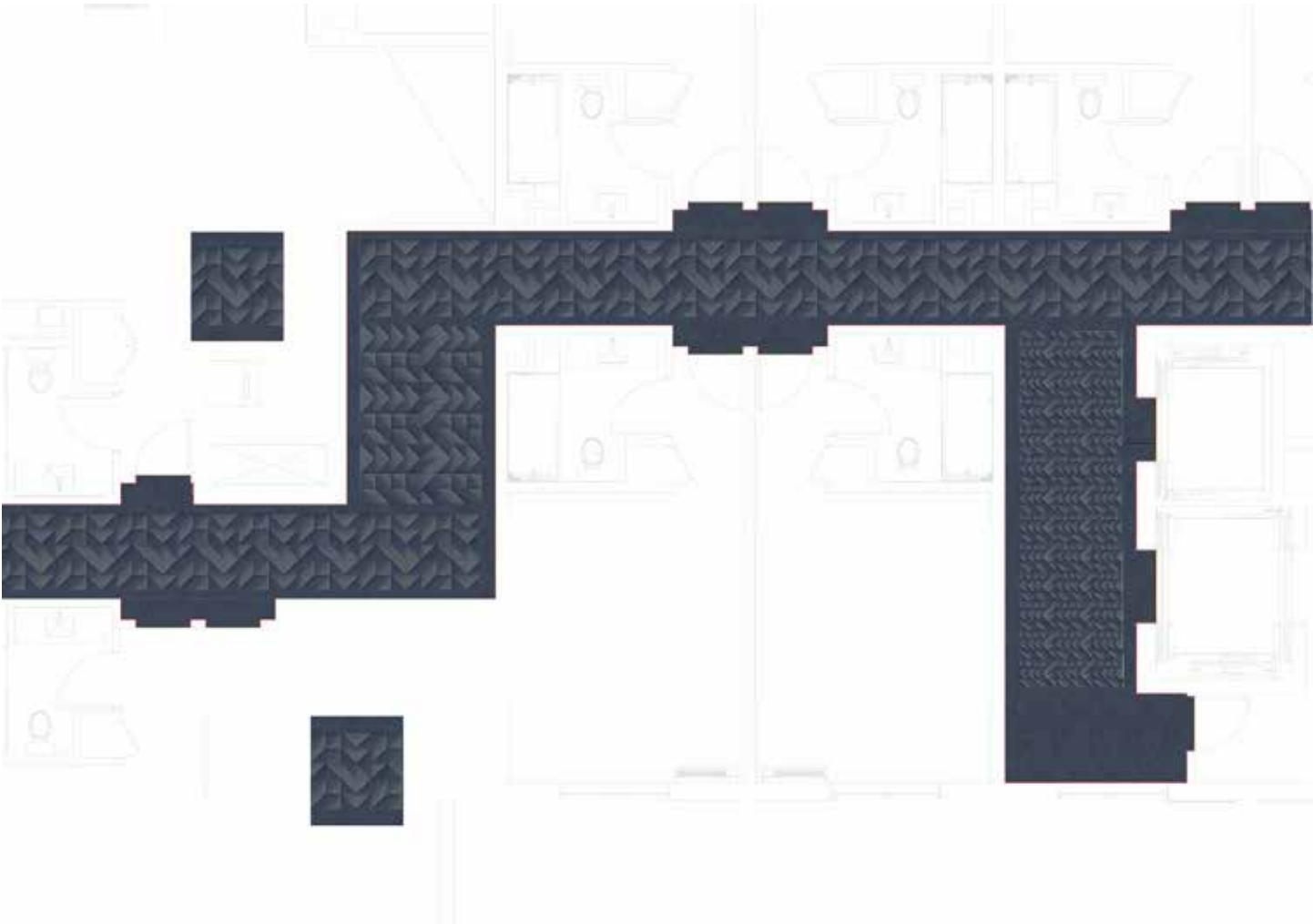
Corridor Runner NXI038486-53

1	GR03	4	K325/19J
2	K323/17J	5	H326/20K
3	K324/18J	6	E315/39D

COURTYARD Public Space Inspired Classic



COURTYARD Corridors Inspired Classic



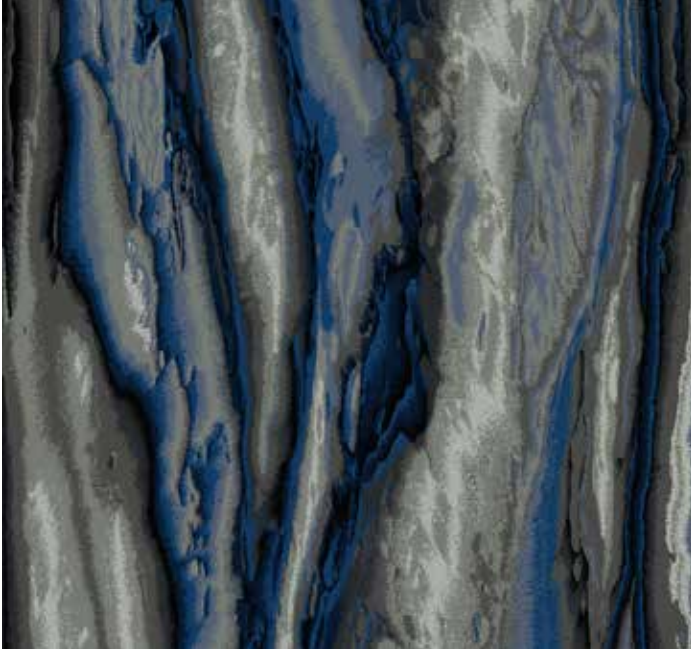


A photograph of a modern hotel lobby. In the foreground, there is a round white table surrounded by four wooden chairs with black woven seats. The floor is covered in a blue and grey patterned carpet. In the background, there are more tables and chairs, and a wall with a chalkboard sign that says "Spring Forward". The lighting is warm and modern, with recessed ceiling lights and pendant lamps.

FAIRFIELD INN

MODERN CALM

FAIRFIELD INN Public Space Modern Calm



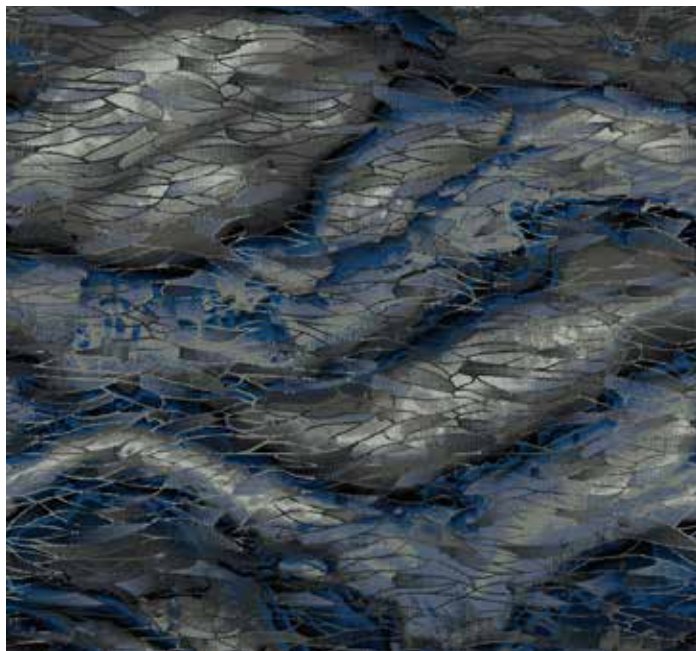
Lobby Rug FX11973-12

Specifications

Repeat Size	144" x 240"
Scale	NTS
Quality	7/8
Fibre	100% Nylon
Loom Width	12'
ID #	274128
Marriott ID Tag	LM001-G2 LM001-G3

1	E310/31D	4	E314/37D	7	J326
2	E312/33D	5	K322/141	8	E316
3	E313/34D	6	J324		

FAIRFIELD INN Public Space Modern Calm



Specifications

Repeat Size	144" x 144"
Scale	NTS
Quality	7/8
Fibre	100% Nylon
Loom Width	12'
ID #	271748
Marriott ID Tag	MR-001 BR-001

Meeting Room/Breakfast Room FX12542-5

1 E310/31D	4 E314/37D	7 J326
2 E312/33D	5 K322/141	8 E316
3 E313/34D	6 J324	

FAIRFIELD INN Corridor Modern Calm



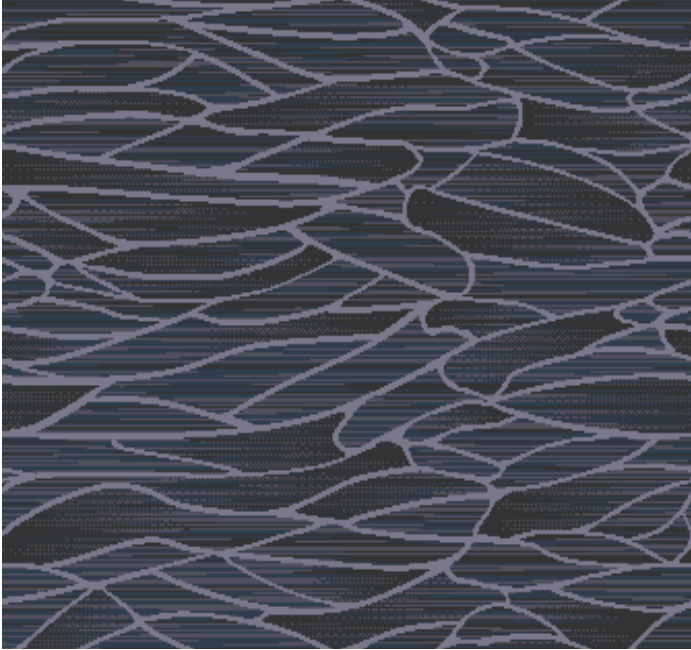
Corridor Outfill/Doorfill BX06097-5

Specifications

Repeat Size	72" x 72"
Scale	NTS
Quality	7/7
Fibre	100% Nylon
Loom Width	12'
ID #	271744
Marriott ID Tag	PG004-ALT3

- 1 33E Gravel
- 2 34E Gravel
- 3 K324/18J

FAIRFIELD INN Corridor Modern Calm



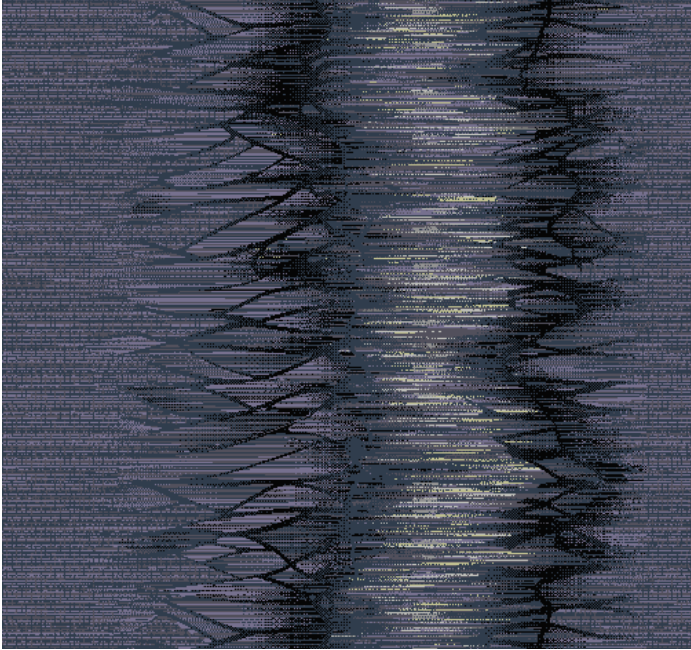
Elevator Lobby/Transition FX12471-3

Specifications

Repeat Size	48" x 62.71"
Scale	NTS
Quality	7/7
Fibre	100% Nylon
Loom Width	12'
ID #	271749
Marriott ID Tag	PG002-ALT3

- 1 33E Gravel
- 2 34E Gravel
- 3 K324/18J
- 4 E316

FAIRFIELD INN Corridor Modern Calm



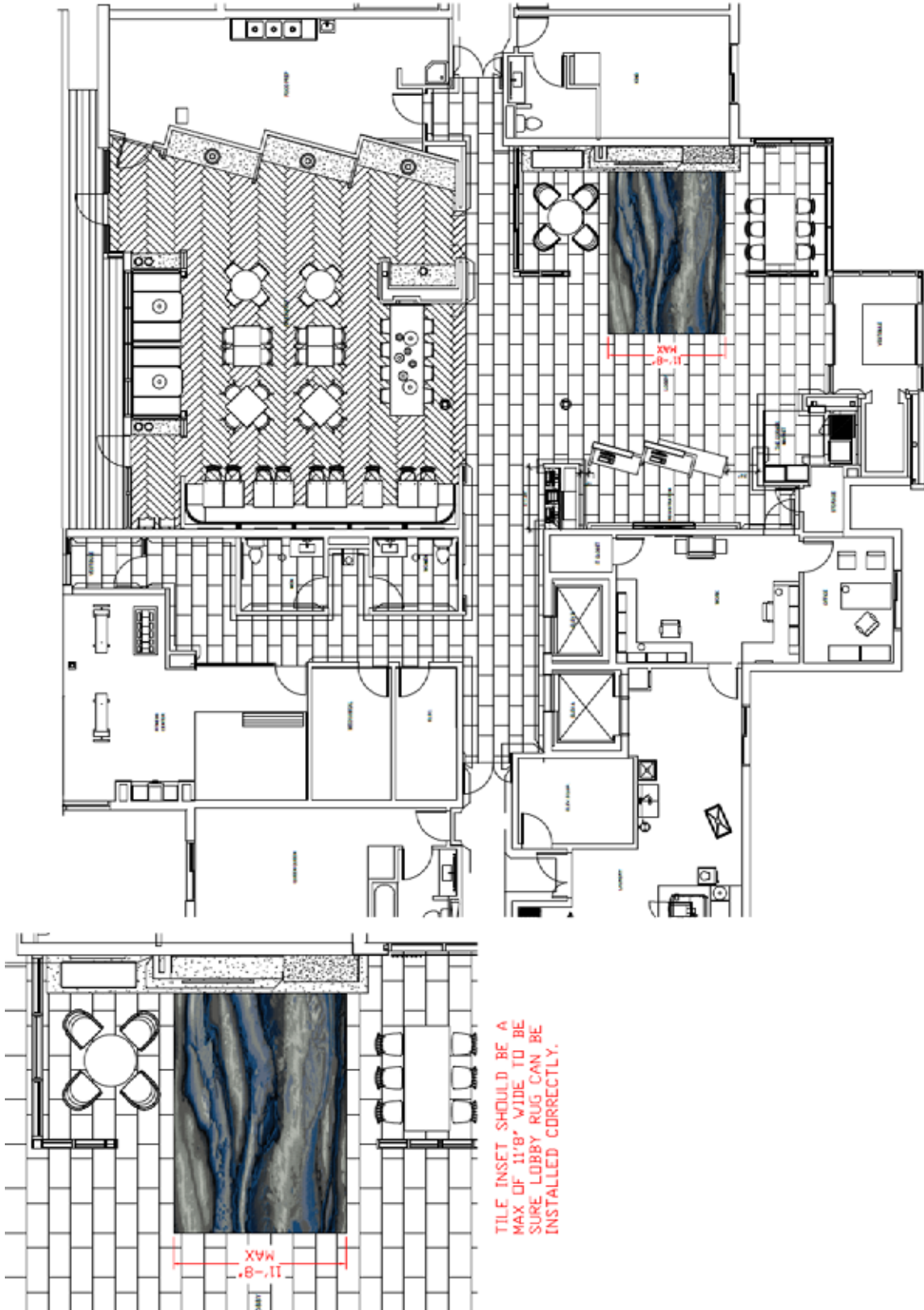
Specifications

Repeat Size	72" x 125.4"
Scale	NTS
Quality	7/7
Fibre	100% Nylon
Loom Width	12'
ID #	271743
Marriott ID Tag	PG001-ALT3

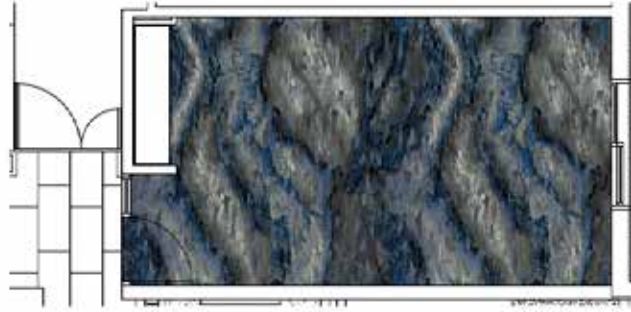
Corridor Runner FX11988-32

- 1 33E Gravel
- 4 E313/34D
- 7 E312/33D
- 2 34E Gravel
- 5 E310/31D
- 8 M300/1G
- 3 K324/18J
- 6 E316

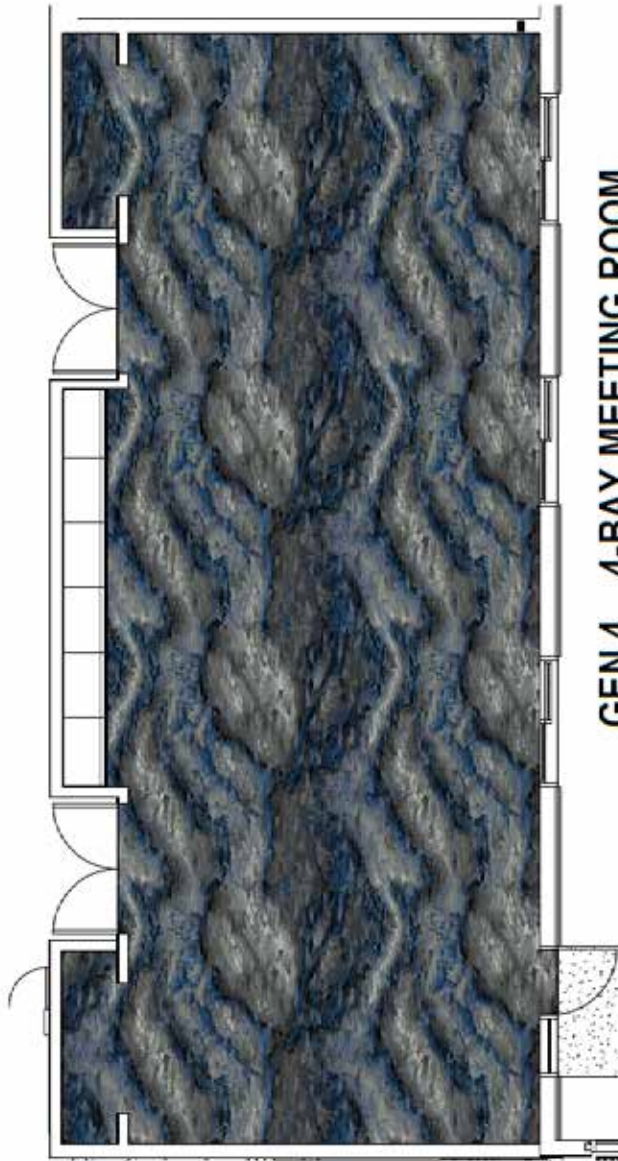
FAIRFIELD INN Lobby Modern Calm



FAIRFIELD INN Meeting Room Modern Calm

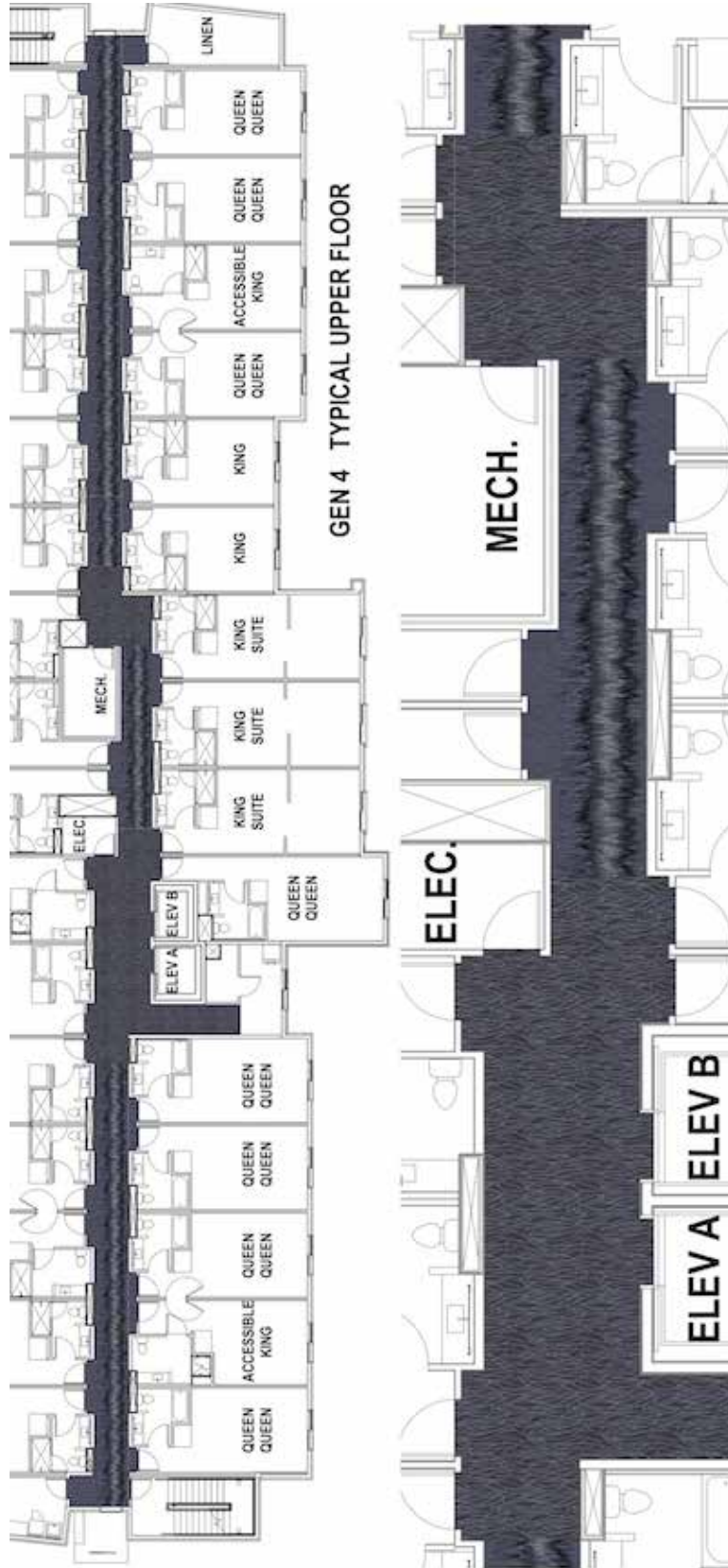


GEN 4
1-BAY MEETING ROOM



GEN 4
4-BAY MEETING ROOM

FAIRFIELD INN Corridor Modern Calm



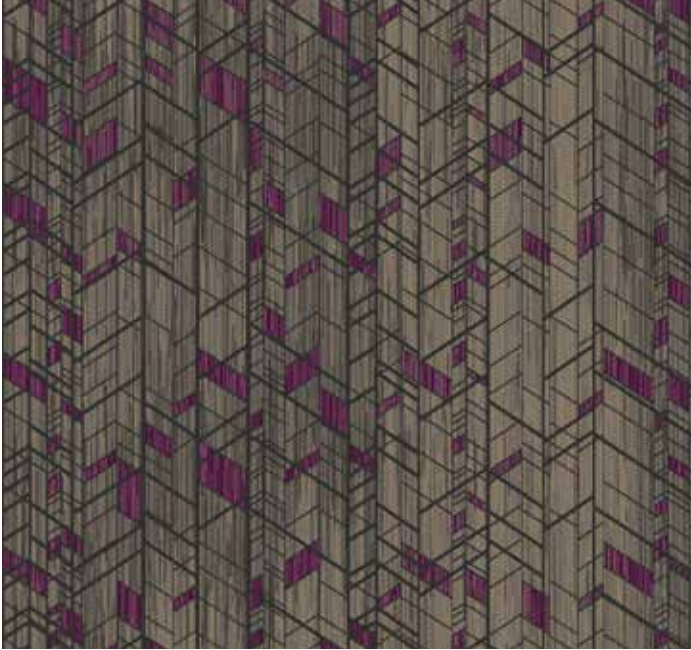


RESIDENCE INN

NEUHAUS



RESIDENCE INN Public Space Neuhaus - Weave



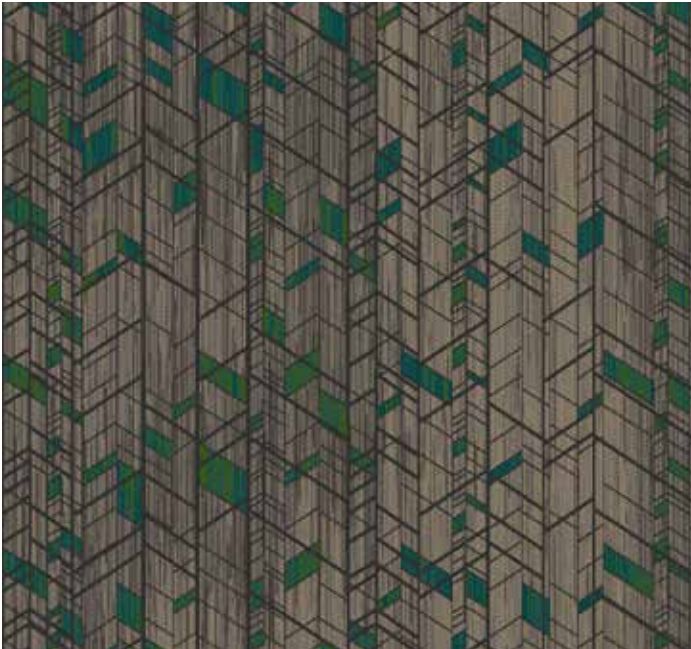
Specifications

Repeat Size	144" x 160.9"
Scale	NTS
Quality	7/8
Fibre	100% Nylon
Loom Width	12'
ID #	273625
Marriott ID Tag	MR-001ALT2

Weave Meeting Room GX13322-16

1	L312	4	G315	7	B325/39K
2	H314/37A	5	M316/10E	8	34K Blush
3	H315/38A	6	D316/40C	9	35J Barolo

RESIDENCE INN Public Space Neuhaus - Honed



Specifications

Repeat Size	144" x 160.9"
Scale	NTS
Quality	7/8
Fibre	100% Nylon
Loom Width	12'
ID #	273623
Marriott ID Tag	MR-001ALT2

Honed Meeting Room GX13322-17

1 L312	4 G315	7 D304
2 H314/37A	5 M316/10E	8 C313 Barber Pole
3 H315/38A	6 D316/40C	9 6K Lime

RESIDENCE INN Public Space Neuhaus - Weave



Specifications

Repeat Size	144" x 142"
Scale	NTS
Quality	7/8
Fibre	100% Nylon
Loom Width	12'
ID #	273621
Marriott ID Tag	LM-002ALT2

Weave Lobby Broadloom FX12774-2

1 K311/3D	5 G315	9 35J Barolo
2 L312	6 M316/10E	10 34K Blush
3 H314/37A	7 D316/40C	
4 H315/38A	8 B325/39K	

RESIDENCE INN Public Space Neuhaus - Weave



Specifications

Repeat Size	204" x 152.5"
Finished Rug	12'8" x 17' with Finished Edges
Scale	NTS
Quality	7/7
Fibre	100% Nylon
Loom Width	12'
ID #	273616
Marriott ID Tag	LM-001ALT2

Weave Lobby Rug FX12647-18

1 K311/3D	5 G315	9 35J Barolo
2 L312	6 M316/10E	10 34K Blush
3 H314/37A	7 D316/40C	
4 H315/38A	8 B325/39K	

RESIDENCE INN Public Space Neuhaus - Honed



Specifications

Repeat Size	144" x 142"
Scale	NTS
Quality	7/8
Fibre	100% Nylon
Loom Width	12'
ID #	273617
Marriott ID Tag	LM-002ALT2

Honed Lobby Broadloom FX12774-1

1 K311/3D	5 G315	9 6K Lime
2 L312	6 M316/10E	10 C313 Barber Pole
3 H314/37A	7 D316/40C	
4 H315/38A	8 D304	

RESIDENCE INN Public Space Neuhaus - Honed



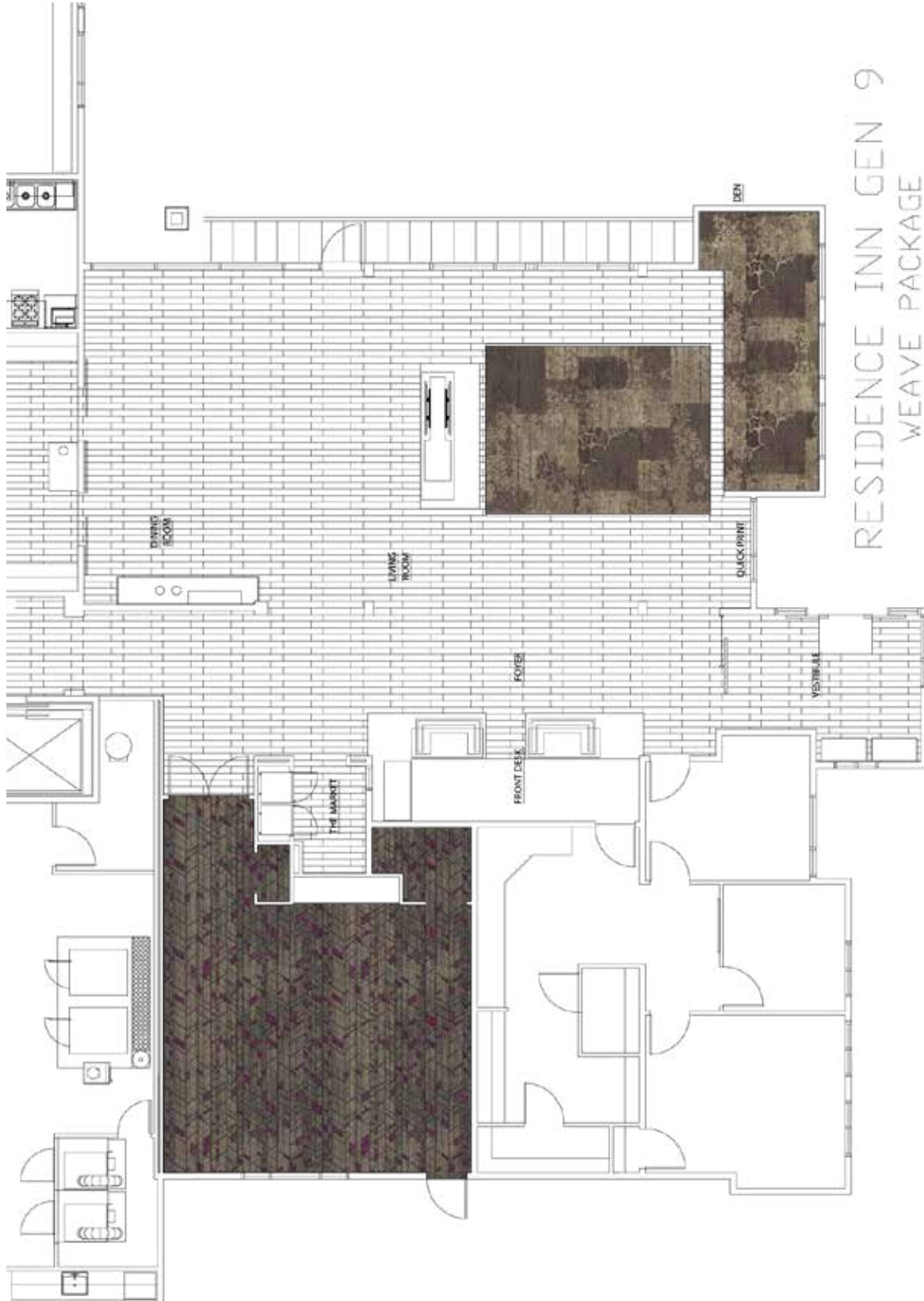
Specifications

Repeat Size	204" x 152.5"
Finished Rug	12'8" x 17' with Finished Edges
Scale	NTS
Quality	7/8
Fibre	100% Nylon
Loom Width	12'
ID #	273614
Marriott ID Tag	LM-001ALT2

Honed Lobby Rug FX12647-23

1 K311/3D	5 G315	9 6K Lime
2 L312	6 M316/10E	10 C313 Barber Pole
3 H314/37A	7 D316/40C	
4 H315/38A	8 D304	

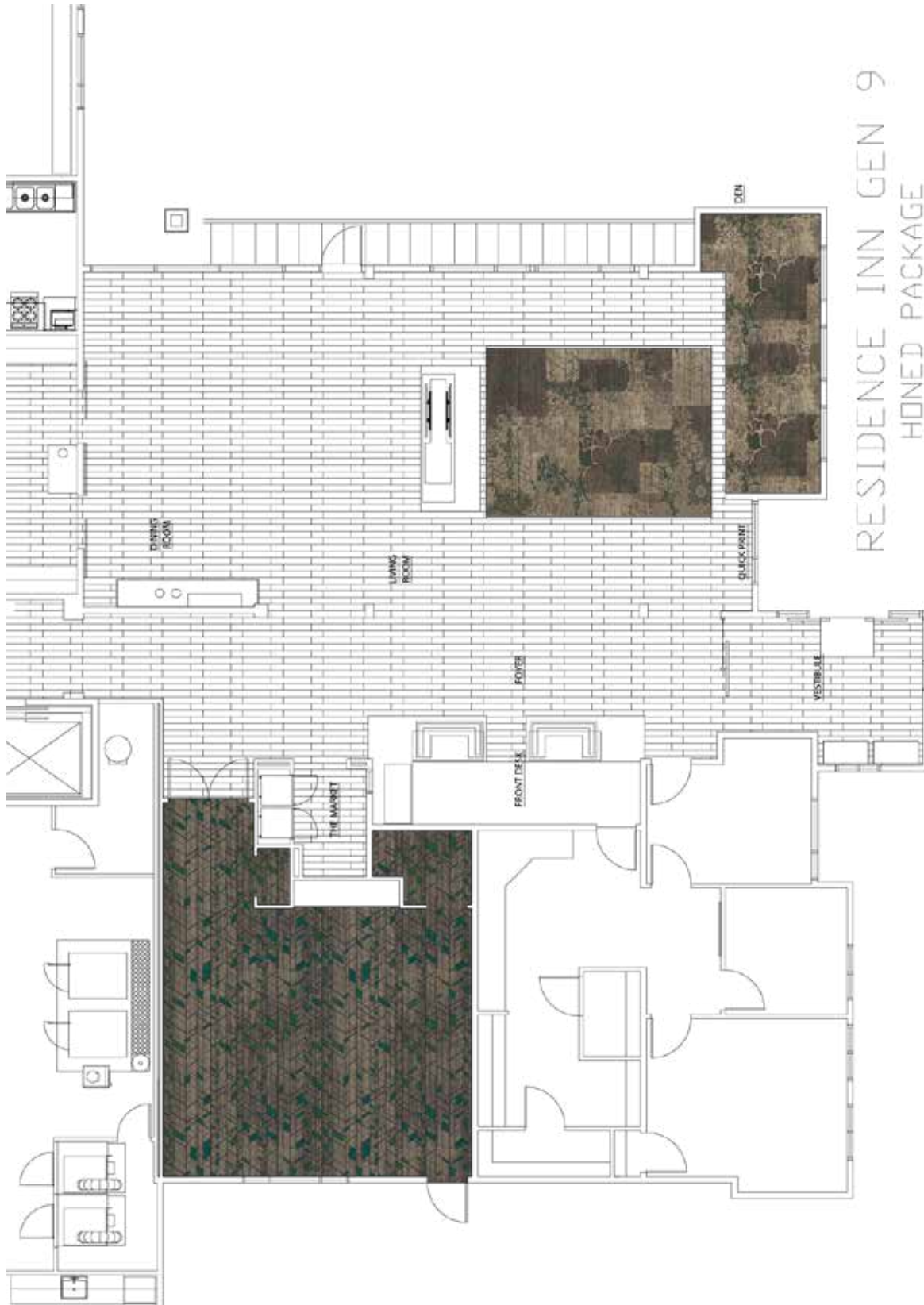
RESIDENCE INN Public Space Neuhaus - Weave



RESIDENCE INN GEN 9
WEAVE PACKAGE

MEETING ROOM: GX13322-16
LOBBY AREA RUG: FX12647-18
LOBBY BROADLOOM: FX12774-2

RESIDENCE INN Public Space Neuhaus - Honed



RESIDENCE INN GEN 9
HONED PACKAGE

RESIDENCE INN Corridors Neuhaus



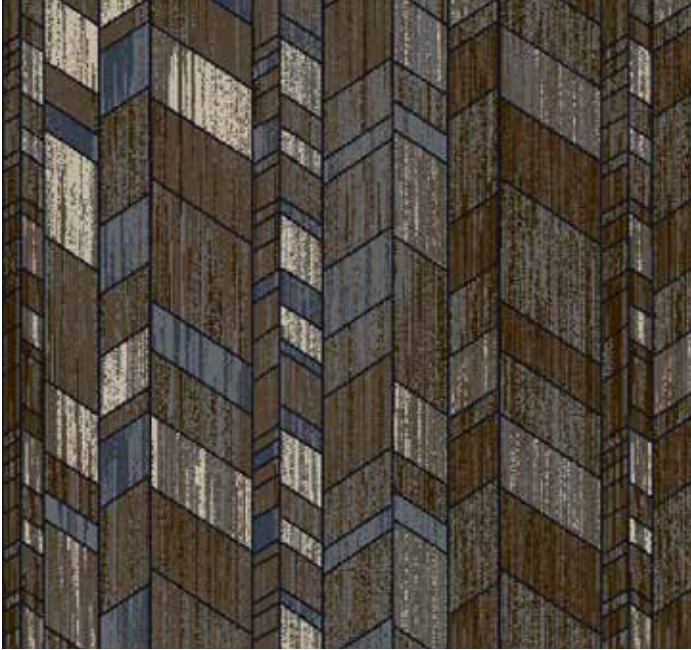
Outfill/Doorfill BX06252-10

Specifications

Repeat Size	72" x 72"
Scale	NTS
Quality	7/7
Fibre	100% Nylon
Loom Width	12'
ID #	288360
Marriott ID Tag	PG-008ALT2

- 1 M316/10E
- 2 H315/38A
- 3 E312

RESIDENCE INN Corridors Neuhaus



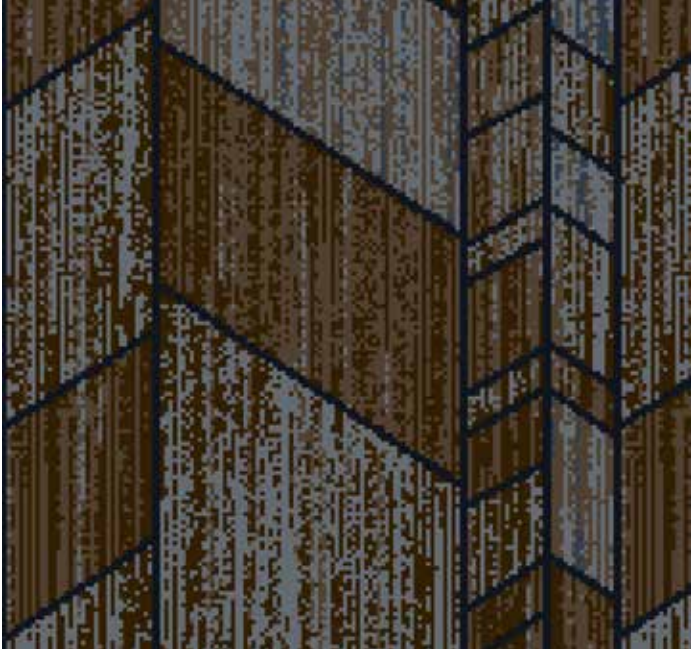
Corridor Runner GX13247-34

Specifications

Repeat Size	72" x 202.6"
Scale	NTS
Quality	7/7
Fibre	100% Nylon
Loom Width	12'
ID #	288370
Marriott ID Tag	PG-001ALT2

1	M316/10E	4	E312	7	K322/14I
2	D316/40C	5	K311/3D		
3	H315/38A	6	K323/17J		

RESIDENCE INN Corridors Neuhaus



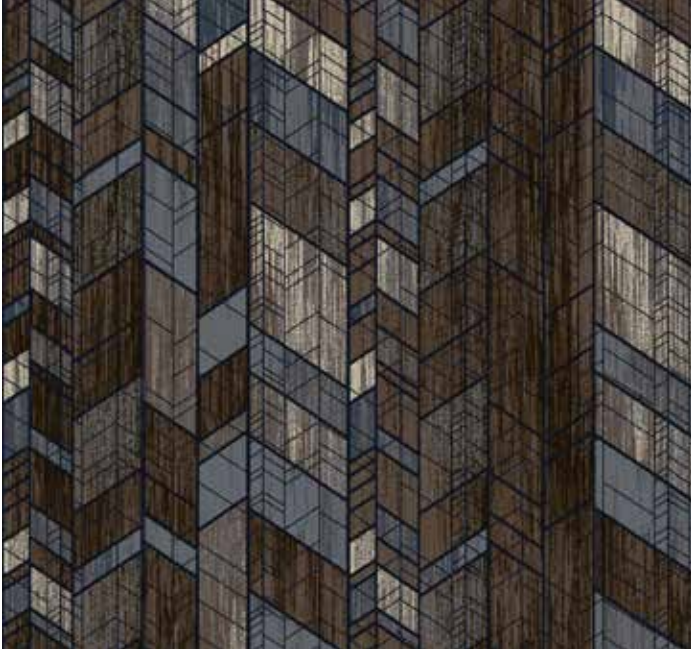
Specifications

Repeat Size	24" x 40.43"
Scale	NTS
Quality	7/7
Fibre	100% Nylon
Loom Width	12'
ID #	288382
Marriott ID Tag	PG-002ALT2

Transition GX13247-36

1	M316/10E	4	K322/14I
2	D316/40C	5	K323/17J
3	H315/38A		

RESIDENCE INN Corridors Neuhaus



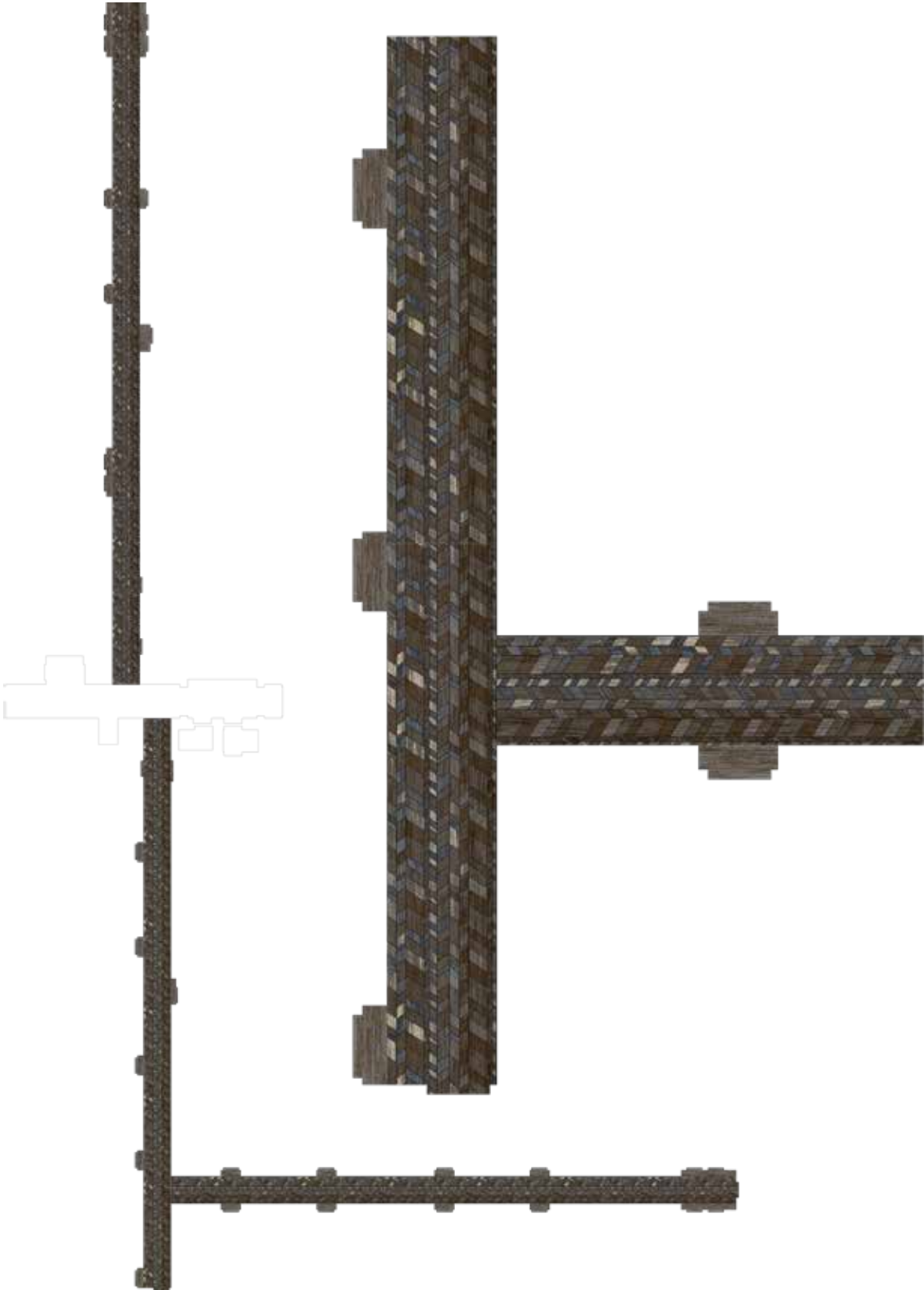
Elevator Lobby GX3255-16

Specifications

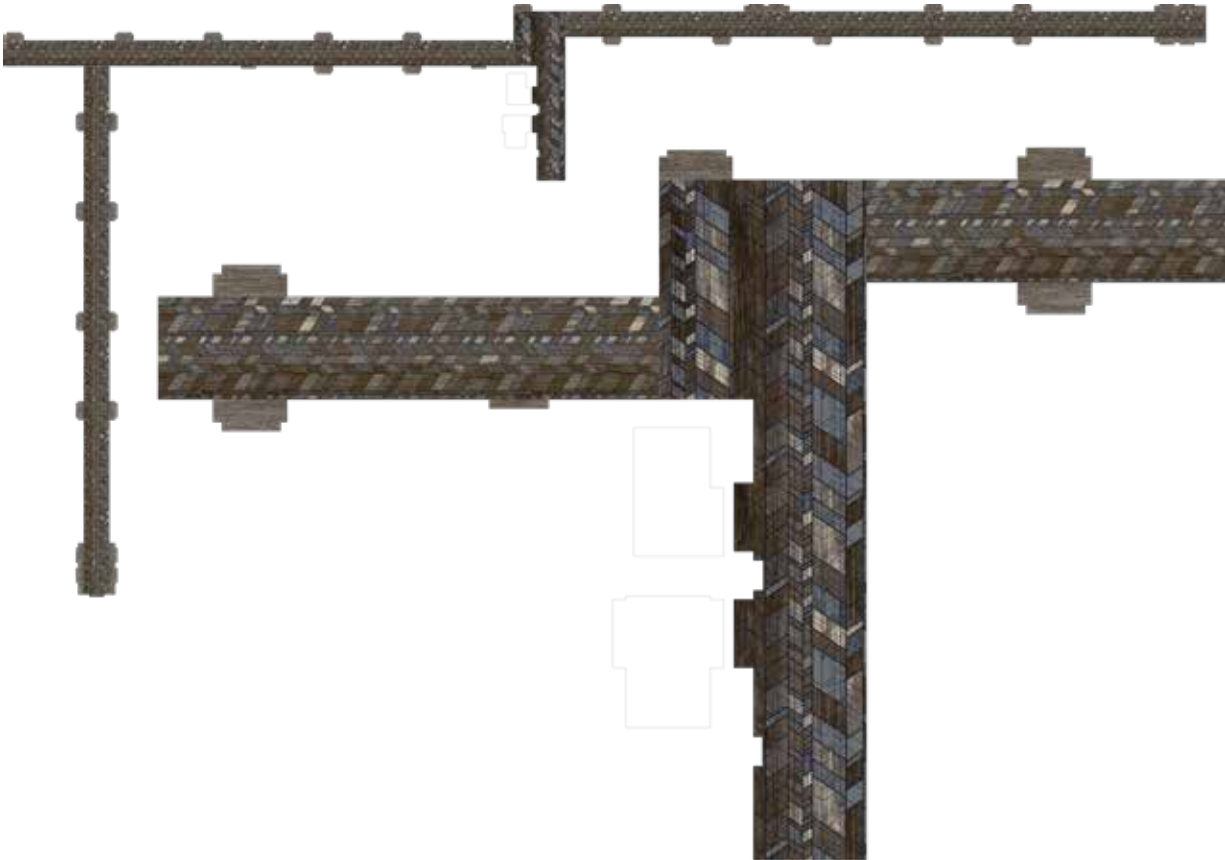
Repeat Size	144" x 160.9"
Scale	NTS
Quality	7/7
Fibre	100% Nylon
Loom Width	12'
ID #	288385
Marriott ID Tag	PG-004ALT2

1	M316/10E	4	E312	7	K322/14I
2	D316/40C	5	K311/3D		
3	H315/38A	6	K323/17J		

RESIDENCE INN Corridor Neuhaus



RESIDENCE INN Corridor Neuhaus





A photograph of a modern hotel lounge or bar area. The room features several square tables with dark wood tops and metal wire chairs. The floor is covered in a patterned carpet with a mix of dark and light tones. In the background, there is a bar counter with a menu board, a water dispenser, and a vending machine. The lighting is warm and ambient.

SPRINGHILL SUITES

PALETTES

SPRINGHILL SUITES Public Spaces Palettes



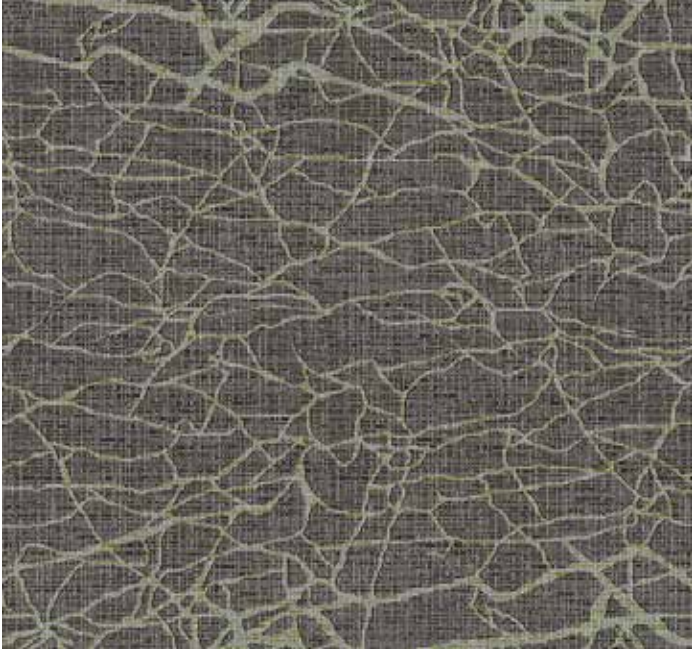
Specifications

Repeat Size	144" x 81"
Scale	NTS
Quality	7/8
Fibre	100% Nylon
Loom Width	12'
ID #	253801
Marriott ID Tag	MR-001ALT2

Meeting Rooms BX04984-8

- 1 B3410
- 2 N304
- 3 F314
- 4 F315
- 5 B9308

SPRINGHILL SUITES Public Spaces Palettes



Specifications

Repeat Size	144" x 84"
Scale	NTS
Quality	7/8
Fibre	100% Nylon
Loom Width	12'
ID #	253809
Marriott ID Tag	GR-001

Lobby Gen 3 FX09545-3

- 1 B3410
- 4 F315
- 2 N304
- 5 B9308
- 3 F314

SPRINGHILL SUITES Public Spaces Palettes



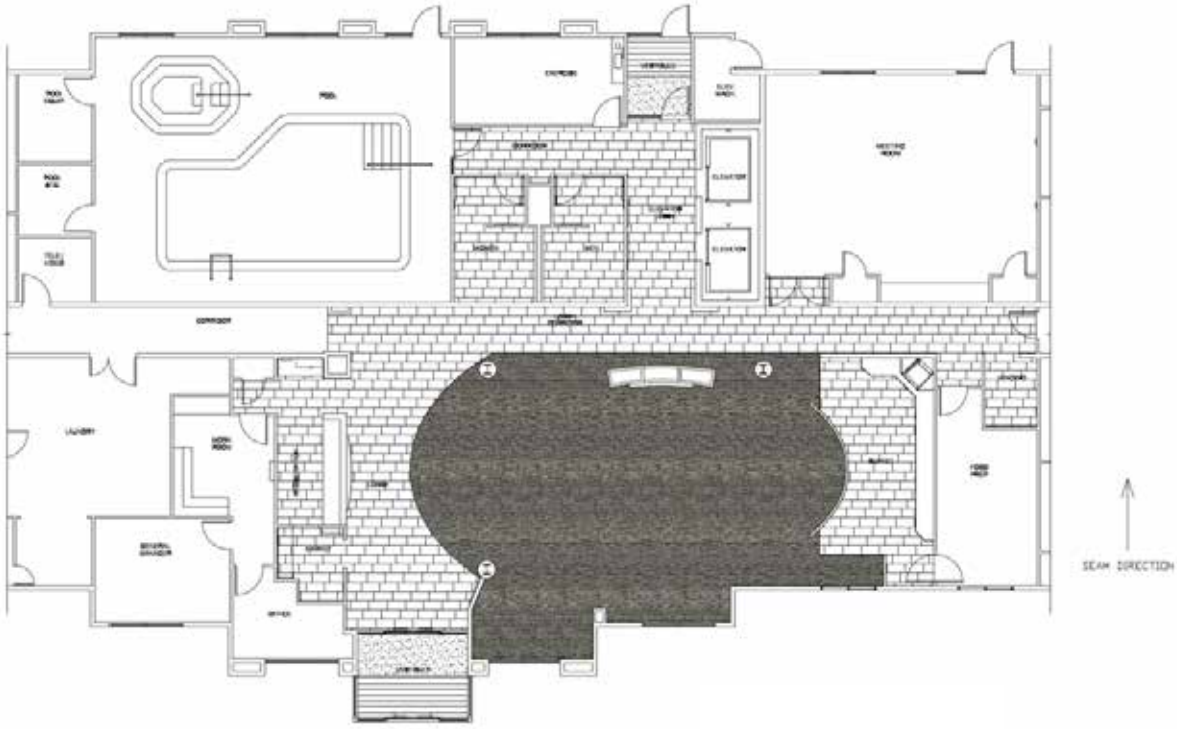
Lobby (Hand-Carved) GX11288-6

Specifications

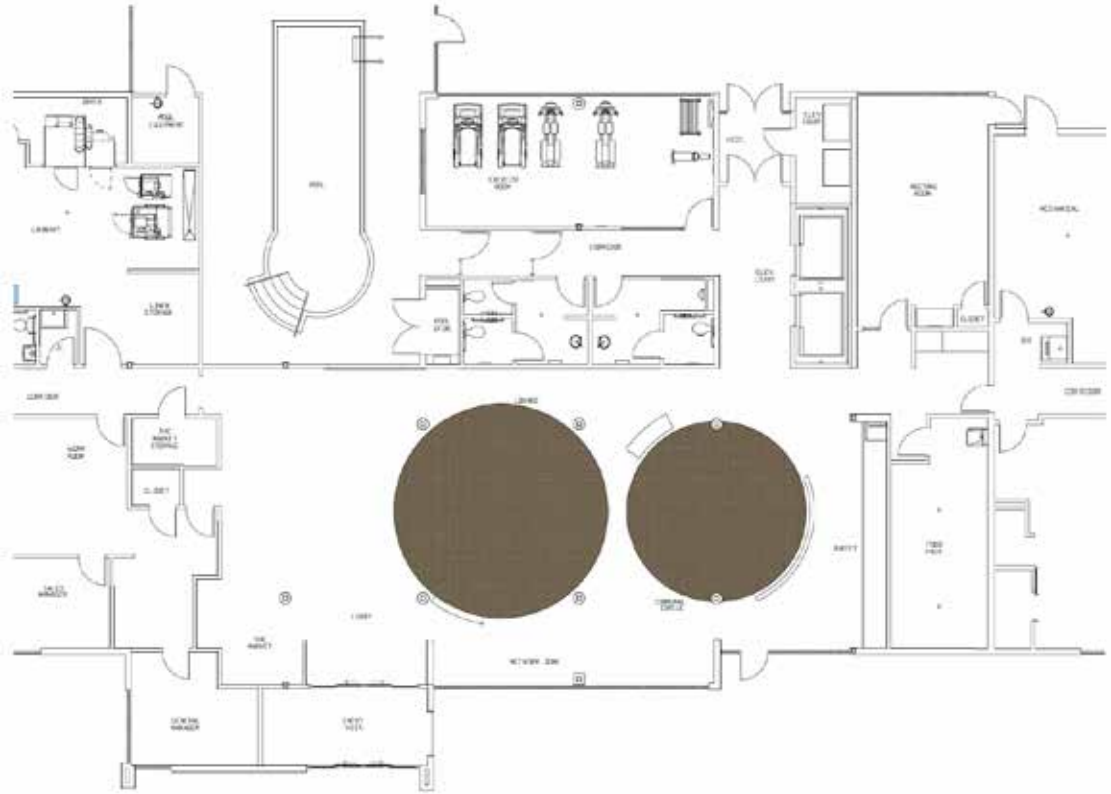
Repeat Size	72" x 71" 1/2
Pile Height	.344 Carved
Scale	NTS
Quality	7/8
Fibre	100% Nylon
Loom Width	12'
ID #	247824
Marriott ID Tag	GR-001

- 1 K312/4D
- 2 H314/37A
- 3 M314/6E
- 4 G315

SPRINGHILL SUITES Public Spaces Palettes

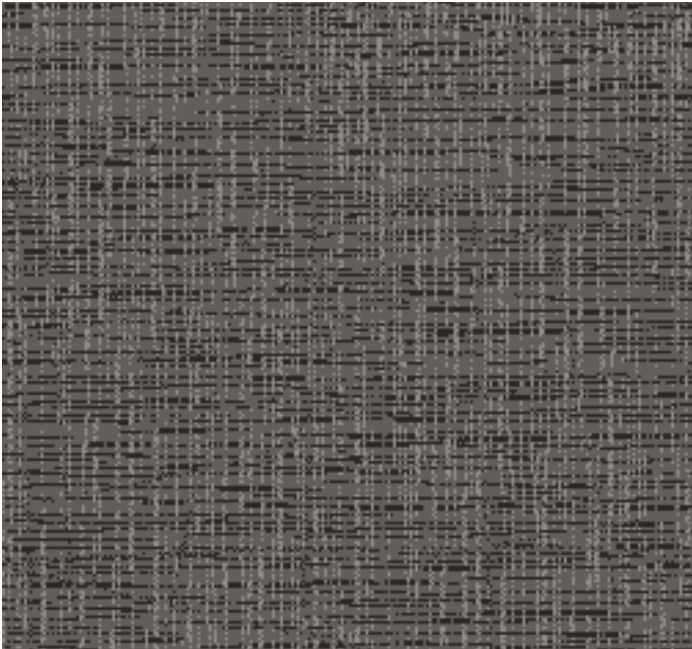


Lobby Carpet - Gen 3



Lobby Carpet - Gen 4 Hand-Carved

SPRINGHILL SUITES Corridors Palettes



Corridor Transition/Outfill BX04984-4

Specifications

Repeat Size	144" x 92.57"
Scale	NTS
Quality	7/7
Fibre	100% Nylon
Loom Width	12'
ID #	247817
Marriott ID Tag	PG-005ALT1B

- 1 F314
- 2 F315
- 3 B9308

SPRINGHILL SUITES Corridors Palettes



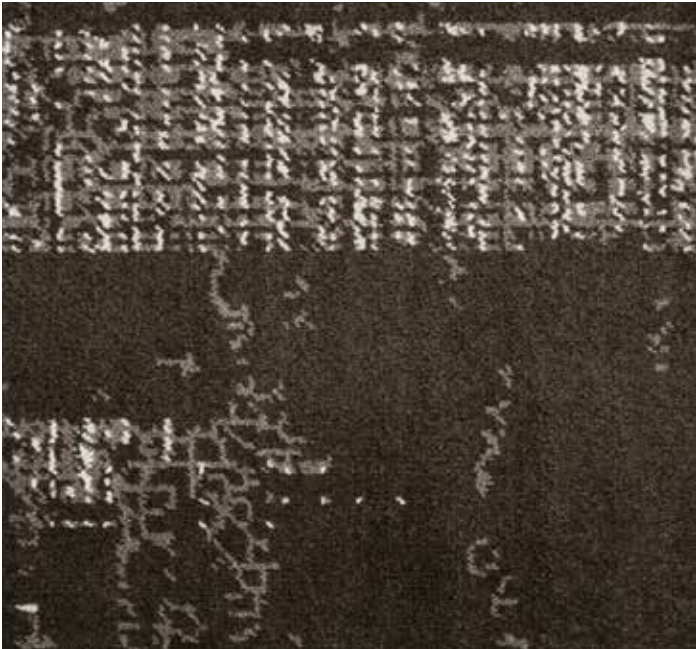
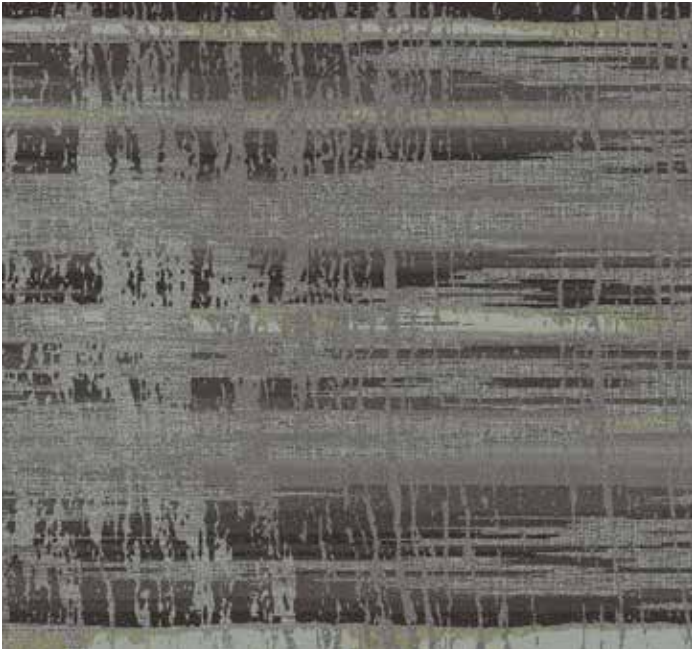
Corridor Runner EX13444-7

Specifications

Repeat Size	144" x 232"
Scale	NTS
Quality	7/7
Fibre	100% Nylon
Loom Width	12'
ID #	253802
Marriott ID Tag	PG-001ALT2

- 1 B3410
- 4 F315
- 2 N304
- 5 B9308
- 3 F314

SPRINGHILL SUITES Corridors Palettes



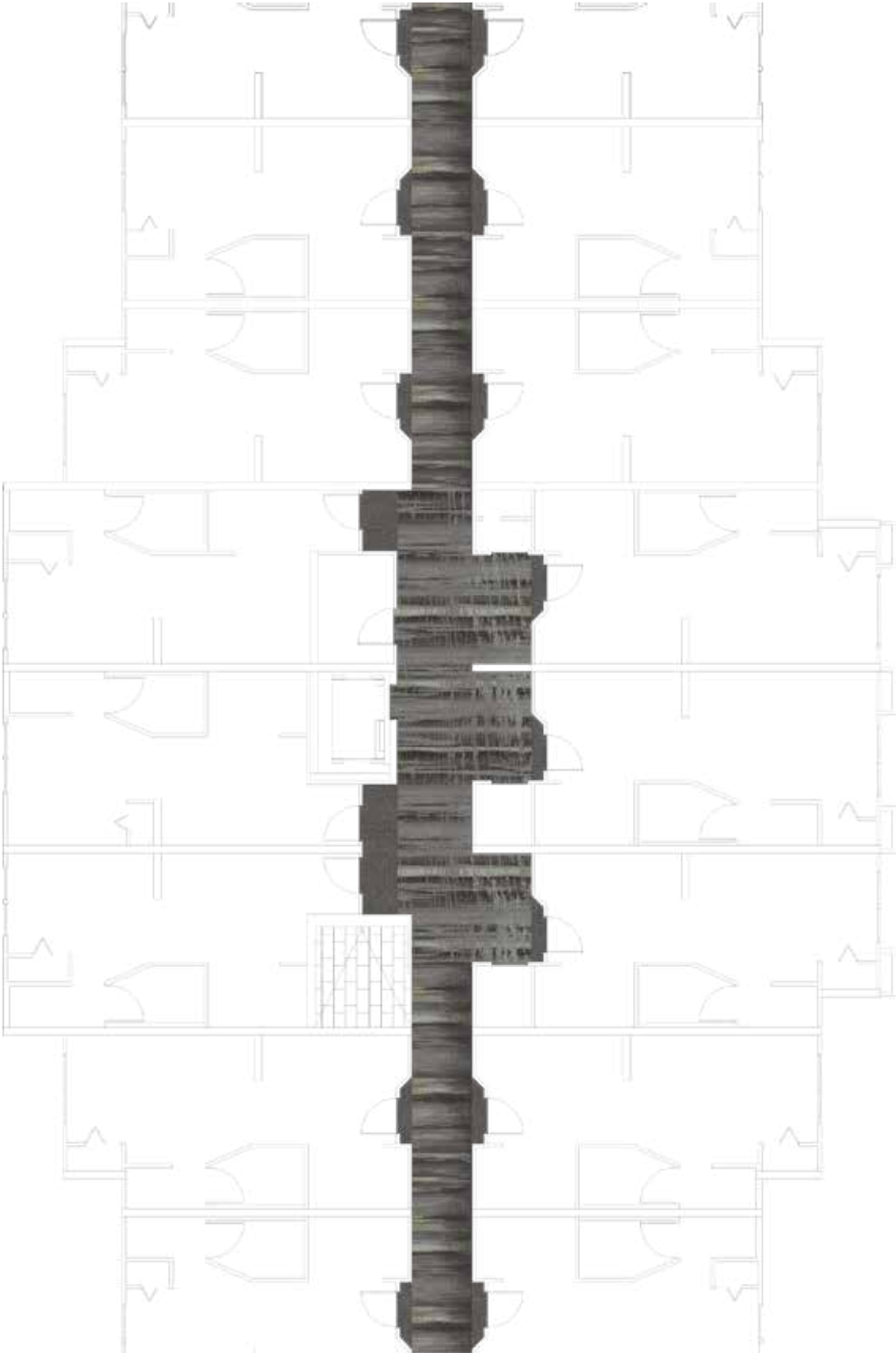
Specifications

Repeat Size	144" x 264"
Scale	NTS
Quality	7/7
Fibre	100% Nylon
Loom Width	12'
ID #	253805
Marriott ID Tag	PG-008ALT2

Elevator Lobby EX13446-4

- 1 B3410
- 4 F315
- 2 N304
- 5 B9308
- 3 F314

SPRINGHILL SUITES Corridors Palettes

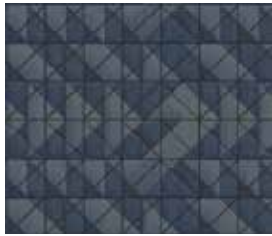


COURTYARD

INSPIRED CLASSIC



Design Number: NXQ038448-43
Marriott ID: 312734



Design Number: NXM041979-6
Marriott ID: 312733



Design Number: NXI042488-5
Marriott ID: 312593



Design Number: NXI042919-4
Marriott ID: 312592



Design Number: NXE041374-22
Marriott ID: 312596



Design Number: NXI038486-53
Marriott ID: 312598

FAIRFIELD INN

MODERN CALM



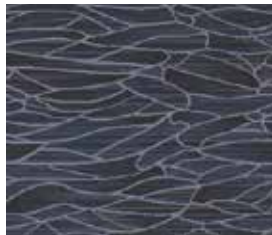
Design Number: FX11973-12
Marriott ID: LM001-G2
LM001-G3



Design Number: FX12542-5
Marriott ID: MR-001
BR-001



Design Number: BX06097-5
Marriott ID: PG004-ALT3

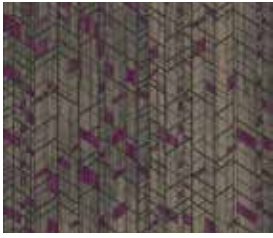


Design Number: FX12471-3
Marriott ID: PG002-ALT3

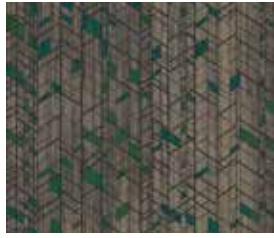


Design Number: FX11988-32
Marriott ID: PG001-ALT3

RESIDENCE INN NEUHAUS



Design Number: GX13322-16
Marriott ID: MR-001ALT2



Design Number: GX13322-17
Marriott ID: MR-001ALT2



Design Number: FX12774-2
Marriott ID: LM-002ALT2



Design Number: FX12647-18
Marriott ID: LM-001ALT2



Design Number: FX12774-1
Marriott ID: LM-002ALT2



Design Number: FX12647-23
Marriott ID: LM-001ALT2



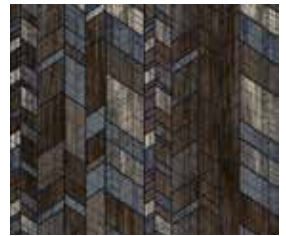
Design Number: BX06252-10
Marriott ID: PG-008ALT2



Design Number: GX13247-34
Marriott ID: PG-001ALT2



Design Number: GX13247-36
Marriott ID: PG-002ALT2

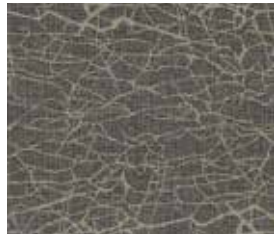


Design Number: GX13255-16
Marriott ID: PG-004ALT2

SPRINGHILL SUITES PALETTES



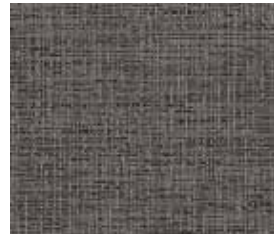
Design Number: BX04984-8
Marriott ID: MR-001ALT2



Design Number: FX09545-3
Marriott ID: GR-001



Design Number: GX11288-6
Marriott ID: GR-001



Design Number: BX04984-4
Marriott ID: PG-005ALT1B



Design Number: EX13444-7
Marriott ID: PG-001ALT2



Design Number: EX13446-4
Marriott ID: PGO08ALT2

Specification

Quality	AC30702425P
Construction	Woven Axminster
Yarn Content	Nylon Type 6,6
Yarn Count	R 600/2 Tex, 2/52s Dewsbury
Pitch Per Inch	7
Rows Per Inch	7
Pile Height	6.4mm 0.250 inch
Pile Weight	862 gm/sm 25.4 oz/sy
Effective Pile Weight	655 gm/sm 19.3oz/sy
Total Weight	1855 gm/sm 54.7 oz/sy
Total Thickness	9.0mm 0.355 inch
Backing Yarns	Polyester/Polypropylene

Performance Test and Treatment

Surface Flammability	ASTM D2859 / CPSC FF 1-70 Pill Test Pass
Radiant Panel Test	ASTM E648 Class 1
Smoke Density	ASTM E662 < 450
Indoor Air Quality	CRI Green Label Plus
Electrostatic Propensity	AATCC 134 < 3.5 kv
End Use Classification	BS EN 1307 Class 33 Heavy Commercial
Pile Treatment	Stain and Soil Protection, Anti Microbial (Optional)

LEED Credit Contribution

Material & Resources

Building Product Disclosure and Optimization	Option 2: Demonstrating Multi-attribute Optimization: NSF 140 Silver Certified
Environmental Product Declarations	
Building Product Disclosure and Optimization	Option 1: Health Product Declaration
Material Ingredients	Option 2: Contains No Ingredients Listed on the REACH Authorization or Candidate List

Indoor Environmental Quality

Low Emitting Materials	CRI Green Label Plus Certified
------------------------	--------------------------------

International Standards



We apply strict control at all stages of production, in compliance with ISO 9001. However, the carpet manufacturing process is a complex series of operations and variations in the specifications could occur. This will not have any detrimental effect on the performance of the product. We reserve the right to amend this specification without prior notice.

Specification

Quality	AC30802429P
Construction	Woven Axminster
Yarn Content	Nylon Type 6,6
Yarn Count	R 600/2 Tex, 2/52s Dewsbury
Pitch Per Inch	7
Rows Per Inch	8
Pile Height	6.4mm 0.250 inch
Pile Weight	986 gm/sm 29.1 oz/sy
Effective Pile Weight	749 gm/sm 22.1 oz/sy
Total Weight	1950 gm/sm 57.5 oz/sy
Total Thickness	9.0mm 0.355 inch
Backing Yarns	Polyester/Polypropylene

Performance Test and Treatment

Surface Flammability	ASTM D2859 / CPSC FF 1-70 Pill Test Pass
Radiant Panel Test	ASTM E648 Class 1
Smoke Density	ASTM E662 < 450
Indoor Air Quality	CRI Green Label Plus
Electrostatic Propensity	AATCC 143 Permanent Anti-Stat < 3.5 KV
End Use Classification	BS EN 1307 Class 33 Heavy Commercial
Pile Treatment	Stain and Soil Protection, Anti Microbial (Optional)

LEED Credit Contribution

Material & Resources

Building Product Disclosure and Optimization	Option 2: Demonstrating Multi-attribute Optimization: NSF 140 Silver Certified
Environmental Product Declarations	
Building Product Disclosure and Optimization	Option 1: Health Product Declaration
Material Ingredients	Option 2: Contains No Ingredients Listed on the REACH Authorization or Candidate List

Indoor Environmental Quality

Low Emitting Materials	CRI Green Label Plus Certified
------------------------	--------------------------------

International Standards



We apply strict control at all stages of production, in compliance with ISO 9001. However, the carpet manufacturing process is a complex series of operations and variations in the specifications could occur. This will not have any detrimental effect on the performance of the product. We reserve the right to amend this specification without prior notice.



ROYAL THAI